

無題 2

music by SHIN

♩ = 132

Cm6 C#m6 Dm6

♩

Cm6 C#m6 Dm6

C#(13)/D#D(13)/E D#(13)/F

C#(13)/D#D(13)/E D#(13)/F

F#(13)/G#G(13)/A G#(13)/A#

F#(13)/G#G(13)/A G#(13)/A#

Cm6 C#m6 Dm6

Cm6 C#m6 Dm6

Bbm6 Fm6 Bbm6 Fm6 Bbm6

C#(13) F#(13) C#(13) F#(13) C#(13) F#(13) B(13) F#(13) B(13) F#(13)

Bbm6 Fm6 Bbm6 Fm6 Bbm6 G#(13)

C#(13) F#(13)

A musical staff in treble clef showing two chords. The first chord is C#(13) and the second is F#(13). Both are represented as block chords with notes on the staff.

B(13) D#(9) to

A musical staff in treble clef showing two chords: B(13) and D#(9). After a double bar line, there is a '4/4' time signature and a 'to' symbol at the end of the staff.

D#(9) ♩=75 Fsus4

A musical staff in treble clef. It starts with a quarter note chord D#(9), followed by a tempo marking ♩=75. The rest of the staff contains a whole note chord Fsus4.

Bbsus4 Asus4

A musical staff in treble clef showing two whole note chords: Bbsus4 and Asus4.

Absus4 Ab

A musical staff in treble clef showing two whole note chords: Absus4 and Ab.

Dbm7 B/Db

A musical staff in treble clef with a key signature change to three sharps (F#, C#, G#). It features a melody line with eighth and quarter notes, and two chords: Dbm7 and B/Db.

Dbm7 B/Db

A musical staff in treble clef with a key signature change to three sharps (F#, C#, G#). It features a melody line with eighth and quarter notes, and two chords: Dbm7 and B/Db.

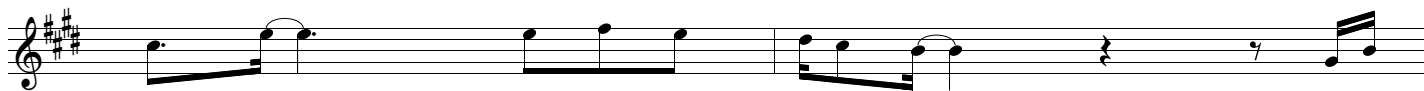
Dbm7

B/Db



Dbm7

B/Db



AM7

B



AM7

B



B

Gbm7

B



Db7sus4

Db7

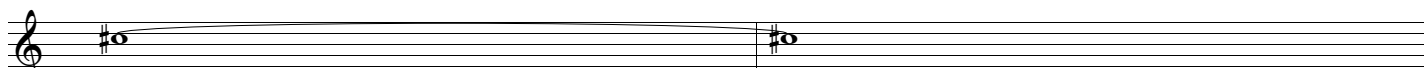
Gbm7

B

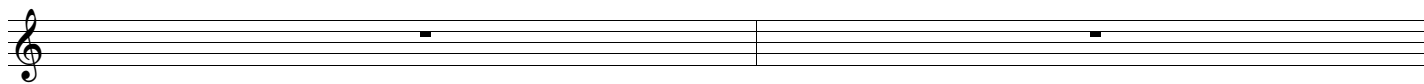


♩=144

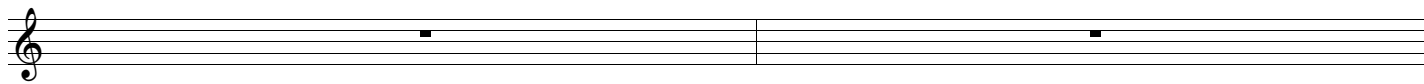
AM7



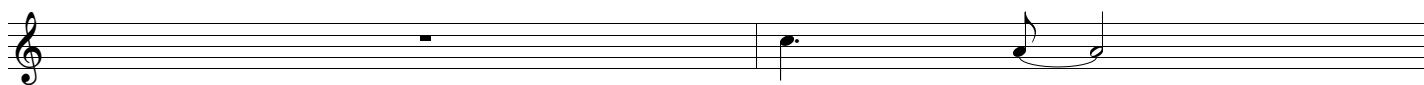
Am F/A



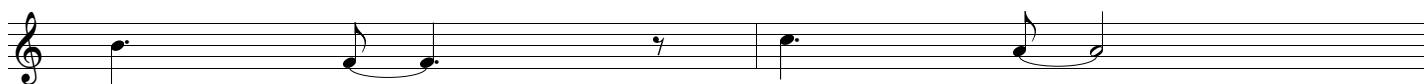
Am6 Am7 Am F/A



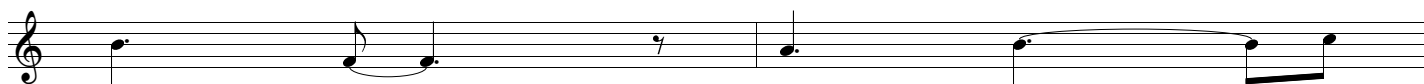
Am6 Am7 Am F/A



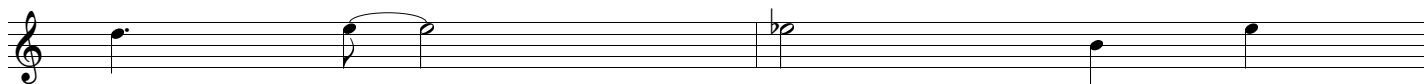
Am6 Am7 Am F/A



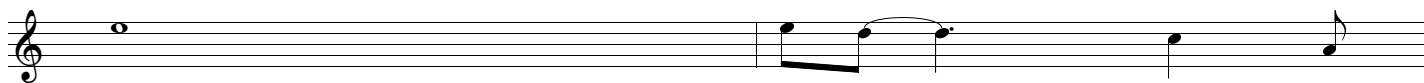
Am6 Am7 FM7



Dm7 B7

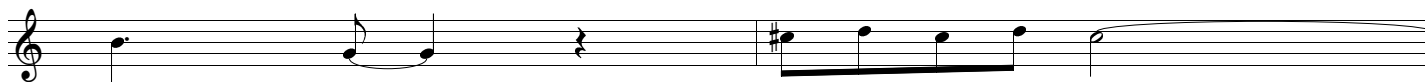


E FM7



G7

AM7



AM7

♩=132

